

ARM Cortex™-M0

32-BIT MICROCONTROLLER

NuMicro™ NuGang Programmer User Manual

The information described in this document is the exclusive intellectual property of Nuvoton Technology Corporation and shall not be reproduced without permission from Nuvoton.

Nuvoton is providing this document only for reference purposes of NuMicro™ microcontroller based system design.

Nuvoton assumes no responsibility for errors or omissions.

All data and specifications are subject to change without notice.

For additional information or questions, please contact: Nuvoton Technology Corporation.

Table of Contents

| | |
|---|----|
| Revision History | 3 |
| 1 Introduction | 4 |
| 2 Driver and Application Program | 5 |
| 2.1 Installing the Driver | 5 |
| 2.2 Installing the Application Program | 5 |
| 2.3 Introduction to the GUI | 5 |
| 3 Starting to Use the NuGang Programmer | 6 |
| 3.1 Example-1: NUC140VE3AN | 6 |
| 3.2 Example-2: M0516LBN | 7 |
| 3.3 Verifying Single Chip | 8 |
| 3.4 Verifying All Chips | 9 |
| 3.5 Reading Chip | 11 |
| 3.6 Updating Chips | 12 |
| 3.7 Automatic Detection of 'Chip-Removed-then-Placed' | 13 |
| 3.8 Special Alert for Failed Programming | 13 |
| 4 Tool Project File (TPJ) | 14 |
| 5 Programmer Information | 15 |
| 5.1 Checking through Application Program | 15 |
| 5.2 Checking through LCD Display | 16 |
| 6 Advanced Functions | 17 |
| 6.1 Serial Number Programming | 17 |
| 6.2 Chip Counter | 19 |

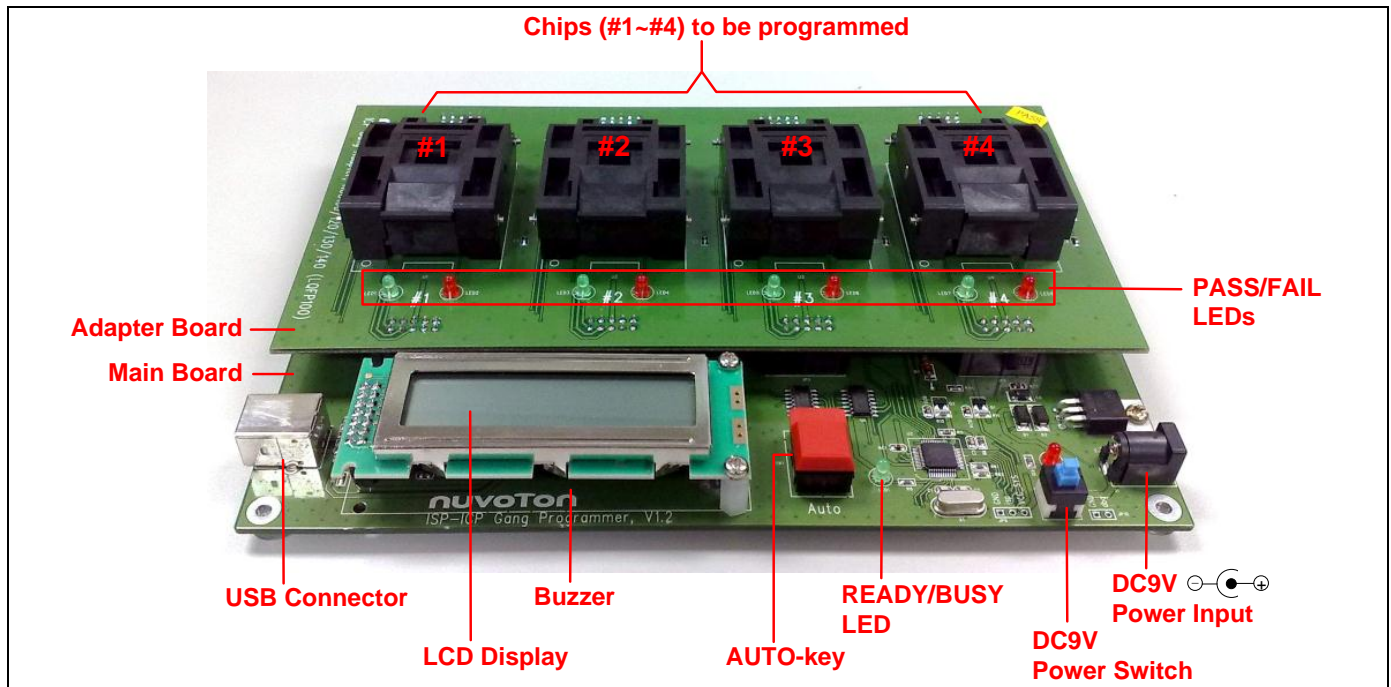
Revision History

| Revision | Description | Date |
|-----------------|---|-------------|
| v6.19 | (1) Supported the NUC123 AN Family. (2) Modified ISD Family related GUI settings. | 2012/11/01 |
| v6.18 | (1) Supported the NUC103 and NUC105 AN Family. (2) Supported the Nano100 BN Series. (3) Supported the NUC122SD2BN. (4) Fixed minor bugs of ISD Family. | 2012/10/03 |
| v6.15 | (1) Fixed a minor software bug. | 2012/05/25 |
| v6.14 | (1) Supported NUC101LE3AN. | 2012/05/16 |
| v6.12 | (1) Supported Serial Number Programming. (2) Supported Chip Counter function. (3) Fixed a minor software bug. | 2012/04/26 |
| v6.05 | (1) Supported the NUC130 and NUC140 CN Family. (2) Supported the Mini51 Series TAN and QAN parts. | 2012/03/15 |
| v6.02 | (1) Supported the N512 Family. (2) Fixed minor software bugs. (3) Supported verifying all chips mode. | 2012/02/14 |
| v6.00 | (1) Supported the Nano100 series. | 2011/12/20 |
| v5.73 | (1) Corrected the Device ID of M051 B-version. (2) Supported to show the failed sockets number on the LCD panel when gang programming is finished. | 2011/11/22 |
| v5.70 | (1) Improved programming stability when NuGang is powered by the USB port instead of a DC9V power adaptor. | 2011/11/04 |
| v5.60 | (1) Supported the M051 B-version parts. (2) Updated the Mini51 parts. (3) Supported to show the PASS/FAIL message on the LCD panel when gang programming is finished. | 2011/10/20 |
| v5.52 | (1) Fixed minor GUI bugs. | 2011/08/18 |
| v5.51 | (1) Supported the Mini51 Series. (2) Fixed minor software bugs. | 2012/07/28 |
| v5.50 | (1) Supported to show "PASS" or "FAIL" on the LCD panel for programming results. (2) Supported to beep for 3 seconds for any failed programming. (3) Supported to turn Off the green/red LEDs when the programmed chip is taken out from the socket and a new chip is placed into the socket. (4) Supported the 'Update Chips' function. | 2011/06/15 |
| v5.31 | (1) Adjusted the NUC102/NUC122 parts list. | 2011/04/07 |
| v5.30 | (1) Supported Tool Project File (TPJ) for GUI setting management. (2) Supported read/verify operation of single chip in one of the 4 sockets. (3) Supported the NUC102/NUC122 series. (4) Fixed some software bugs. | 2011/03/18 |
| v1.00 | (1) First formal released version. | 2010/11/09 |

1 Introduction

The “NuGang Programmer” provides the four-chip gang programming functionality, which is designed especially for mass-production in the customer site. After online downloading the programming data into the programmer, user may start the off-line gang programming by pressing the **AUTO**-key on the programmer.

The Picture of “NuGang Programmer”



Component Description

Main Board and Adapter Board:

The programmer consists of a main board for gang programming control and an adapter board containing the sockets for the MCU chips to be programmed. Note that different chip package will have different adapter board.

USB Connector:

Connect to a PC for online downloading the programming data.

LCD Display:

Show the programmer's information and status.

Buzzer:

Show the programmer's status by a sound message.

AUTO-key:

Press this key to start off-line gang programming.

READY/BUSY LED:

Show the Gang Programmer's status; 'On' means READY and 'Off' means BUSY.

DC9V Power Input and Switch:

Supply DC 9V power for off-line operation. Note that the programmer is always powered On by host when it is connected to the USB port.

PASS/FAIL LEDs:

Show the individual programming result for chips #1 to #4; 'Green' means PASS and 'Red' means FAIL.

2 Driver and Application Program

2.1 Installing the Driver

The NuGang Programmer has a built-in USB-to-Serial bridge chip (PL-2303). When connected to host, it will appear as a *USB-to-Serial COM port* in the System\Hardware\Device Manager. Before starting to use this programmer, the driver must be installed if the PL-2303 driver has never been installed in this host. The driver is included in the folder **[(1) Driver]**.

2.2 Installing the Application Program

Doubly-click the setup file included in the folder **[(2) Application Program]** to install the application program. After the installation is completed successfully, a new item "Nuvoton Tools \ Nuvoton NuGang Programmer, v?.??" will appear in the Windows START-menu.

2.3 Introduction to the GUI

The screenshot shows the Nuvoton NuGang Programmer v6.19 GUI. Red arrows and text labels point to various interface elements:

- Right click for advanced function**: Points to the top right corner of the window.
- Select wanted Part No.**: Points to the 'Part No.' dropdown menu showing 'NuMicro_NUC100' and 'NUC140VE3CN'.
- Load file for APROM/DataFlash/LDROM buffer (See Note)**: Points to the 'Load File' button.
- Update the MCU chips**: Points to the 'Update Chips' button.
- Verify the MCU chip**: Points to the 'Verify Chip' button.
- Read the MCU chip**: Points to the 'Read Chip' button.
- Close the program**: Points to the 'Exit' button.
- Download the current GUI setting and buffer data into the programmer**: Points to the 'Download Programmer' button.
- Show the programming data downloaded in the programmer**: Points to the 'Programmer Information' button.
- Set CONFIG bits**: Points to the 'CONFIG Setting' button.
- Select updated items when 'Update Chip' is clicked**: Points to the 'Items to be Updated' section with checkboxes for APROM, DataFlash, LDROM, and CONFIG.
- Click to show APROM buffer**: Points to the 'APROM Buffer' tab.
- Click to show DataFlash buffer**: Points to the 'DataFlash Buffer' tab.
- Click to show LDROM buffer**: Points to the 'LDROM Buffer' tab.
- Information of the loaded file**: Points to the 'File Name', 'Code Size', and 'Checksum' fields.
- Processing status**: Points to the 'Ready...' status indicator.
- The COM port to which the programmer is to be connected**: Points to the 'S/N' and 'Chip Counter' fields.

Note:
 Click 'APROM Buffer' and then click 'Load File' for APROM buffer.
 Click 'DataFlash Buffer' and then click 'Load File' for DataFlash buffer.
 Click 'LDROM Buffer' and then click 'Load File' for LDROM buffer.

3 Starting to Use the NuGang Programmer

The NuGang Programmer always functions as an 'ICP Gang Programmer' for the NuMicro™ family products.

3.1 Example-1: NUC140VE3AN

To do the ICP gang programming for NUC140VE3AN, please follow the steps below:

Step 1: Set the programmer type as '**ICP Gang Programmer**' (set as default).

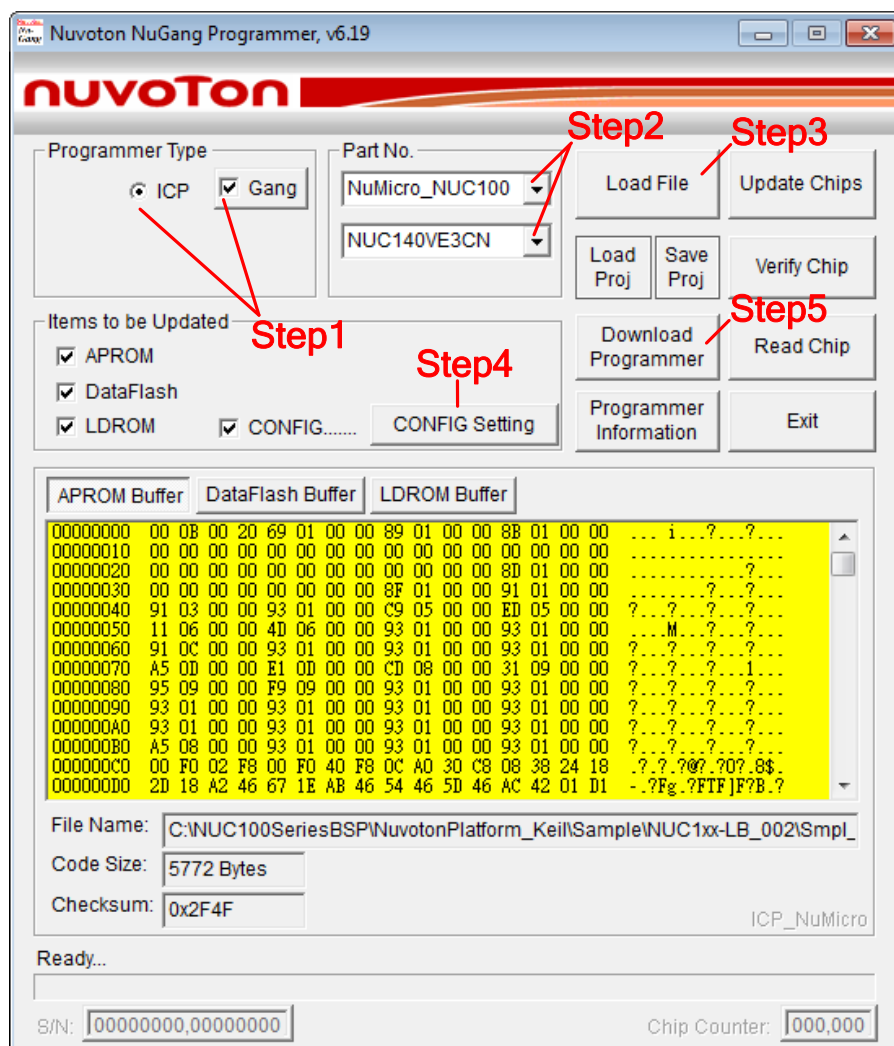
Step 2: Select the wanted part number (e.g. NUC140VE3AN).

Step 3: Load the programming data into APROM/DataFlash/LDROM buffers by clicking '**APROM Buffer**' then **Load File**, '**DataFlash Buffer**' then **Load File** and '**LDROM Buffer**' then **Load File**', respectively.

Step 4: Set the CONFIG bits. (*Note: Step 2 - 4 can be completed by loading a TPJ file. Please refer to [Section 4](#).*)

Step 5: Download the buffers' data and CONFIG setting into the programmer.

Step 6: Disconnect the programmer from the host, and press the **AUTO**-key on the programmer to start off-line gang programming.



nuvoTonTM NuMicroTM NuGang Programmer User Manual

3.2 Example-2: M0516LBN

To do the ICP gang programming for M0516LBN, please follow the steps below:

Step 1: Set the programmer type as '**ICP Gang Programmer**' (set as default).

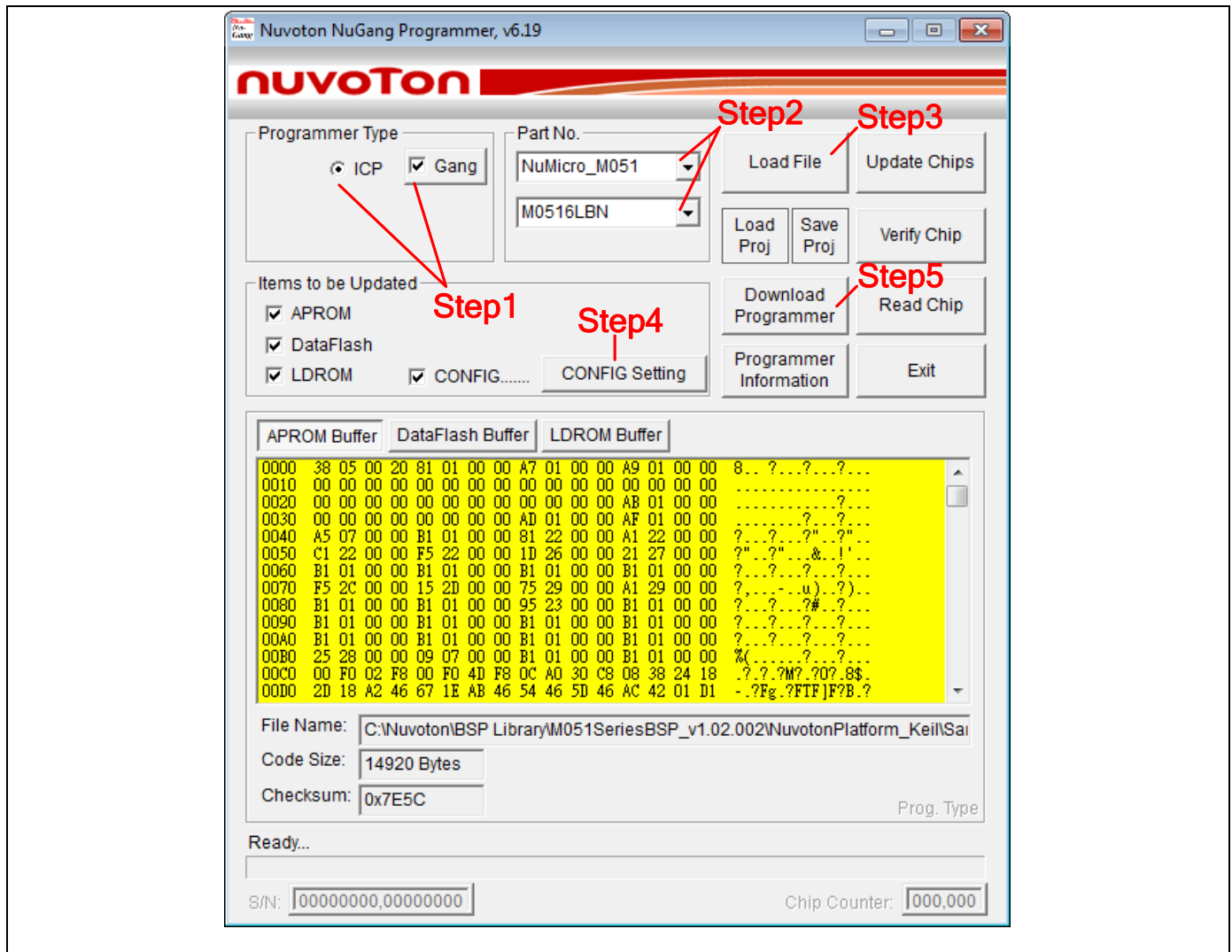
Step 2: Select the wanted part number (e.g. M0516LBN).

Step 3: Load the programming data into APROM/DataFlash/LDROM buffers by clicking '**APROM Buffer**' then **Load File**', '**DataFlash Buffer**' then **Load File**' and '**LDROM Buffer**' then **Load File**', respectively.

Step 4: Set the CONFIG bits. (**Note: Step 2 - 4 can be completed by loading a TPJ file. Please refer to [Section 4](#).**)

Step 5: Download the buffers' data and CONFIG setting into the programmer.

Step 6: Disconnect the programmer from the host and press the **AUTO**-key on the programmer to start off-line gang programming.



3.3 Verifying Single Chip

Although the gang programming operation (by pressing the **AUTO**-key) includes verifying a chip, user may verify the chip again. To verify a single chip, please follow the steps below:

Step 1: Set the programmer type as '**ICP Gang Programmer**' (set as default).

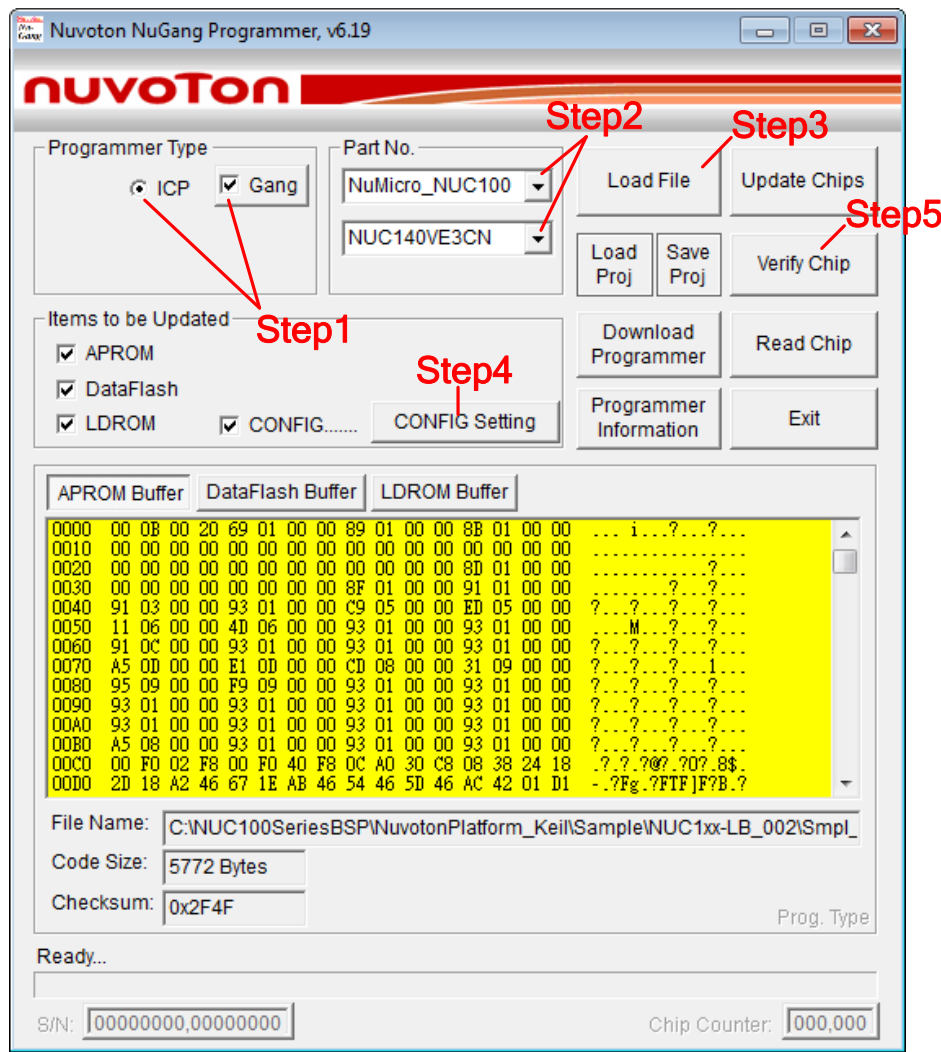
Step 2: Select the wanted part number.

Step 3: Load the programming data into APROM/DataFlash/LDROM buffers by clicking '**APROM Buffer**' then **Load File**', '**DataFlash Buffer**' then **Load File**' and '**LDROM Buffer**' then **Load File**', respectively.

Step 4: Set the CONFIG bits. (*Note: Step 2 - 4 can be completed by loading a TPJ file. Please refer to [Section 4](#).*)

Step 5: Compare the chip's contents with the buffers' data and CONFIG setting.

Note: The chip can be verified only when it was not locked.



3.4 Verifying All Chips

In NuGang Programmer v6.02, a special mode, Verify mode, can be used to verify all chips placed in the sockets simultaneously. To enter Verify mode, please follow the steps below:

Step 1: Right-click the window header and invoke the **Advanced Functions** command for further settings.

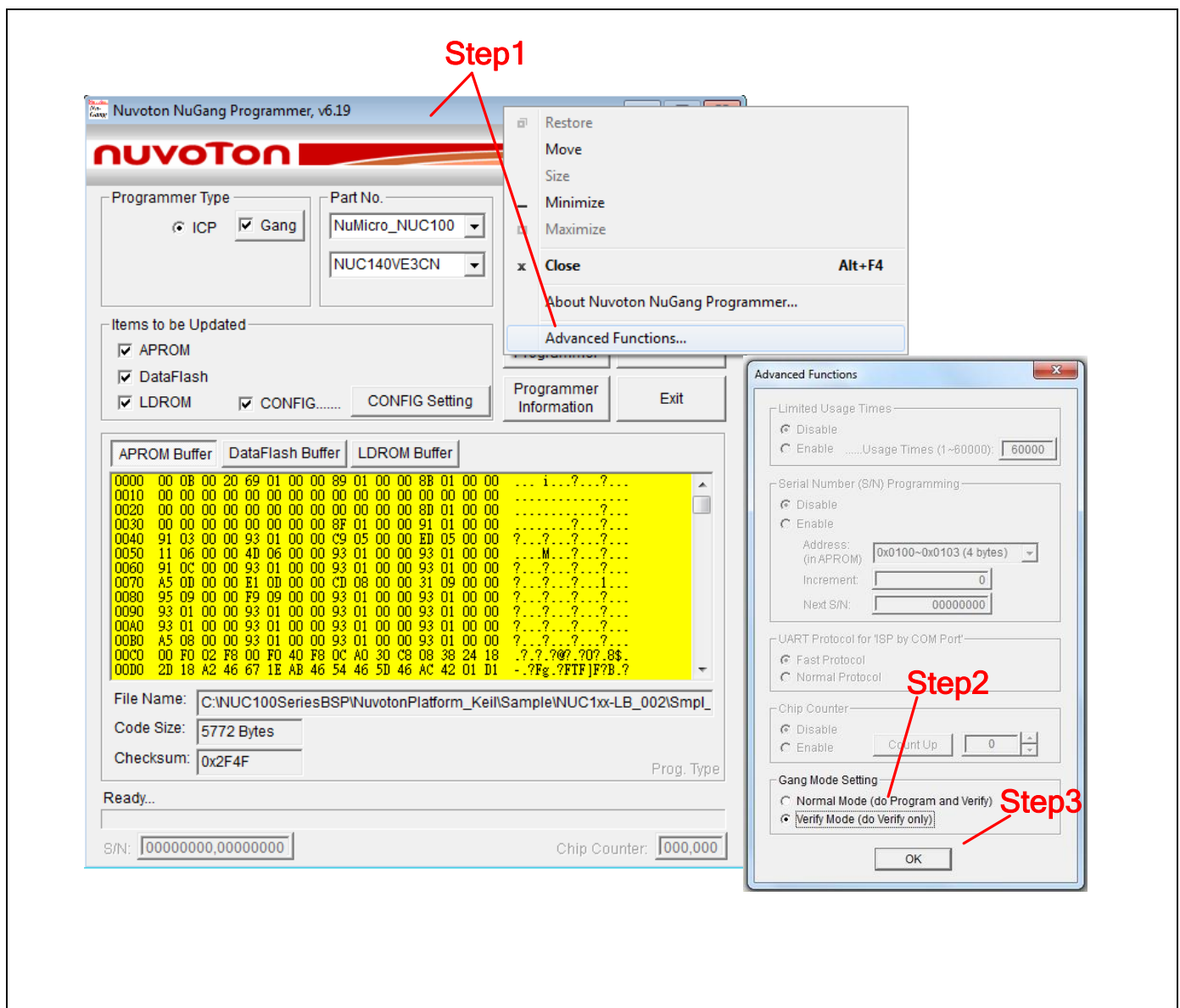
Step 2: Select the **Verify Mode (do Verify only)** option in the **Gang Mode Setting** section.

Step 3: Click **OK** to confirm the setting.

Step 4 - Step 8: Do the same steps as [Section 3.1](#).

Step 9: Disconnect the programmer from the host, and press the **AUTO**-key on the programmer to start off-line all chips verification.

Note: User cannot update the code of the chip placed in the socket under this mode.



NuMicro™ NuGang Programmer User Manual

nuvoTon

The screenshot shows the Nuvoton NuGang Programmer v6.19 interface. Red arrows point to specific elements labeled Step 4 through Step 8:

- Step 4:** Points to the 'Items to be Updated' section, specifically the 'APROM' checkbox.
- Step 5:** Points to the 'Part No.' dropdown menu, which is set to 'NuMicro_NUC100'.
- Step 6:** Points to the 'Update Chips' button.
- Step 7:** Points to the 'CONFIG Setting' button.
- Step 8:** Points to the 'Download Programmer' button.

The interface includes the following sections:

- Programmer Type:** Radio buttons for 'ICP' and 'Gang' (selected).
- Part No.:** Dropdown menu showing 'NuMicro_NUC100' and 'NUC140VE3CN'.
- Items to be Updated:** Checkboxes for 'APROM', 'DataFlash', 'LDROM', and 'CONFIG.....'.
- Buttons:** 'Load File', 'Update Chips', 'Load Proj', 'Save Proj', 'Verify Chip', 'Download Programmer', 'Read Chip', 'Programmer Information', and 'Exit'.
- Buffers:** Tabs for 'APROM Buffer', 'DataFlash Buffer', and 'LDROM Buffer'. The 'APROM Buffer' is active, showing a memory dump with addresses and hex values.
- File Name:** 'C:\NUC100SeriesBSP\NuvotonPlatform_Keil\Sample\NUC1xx-LB_002\Smpl_...'.
- Code Size:** '5772 Bytes'.
- Checksum:** '0x2F4F'.
- Ready...** status bar.
- S/N:** '00000000,00000000'.
- Chip Counter:** '000,000'.

3.5 Reading Chip

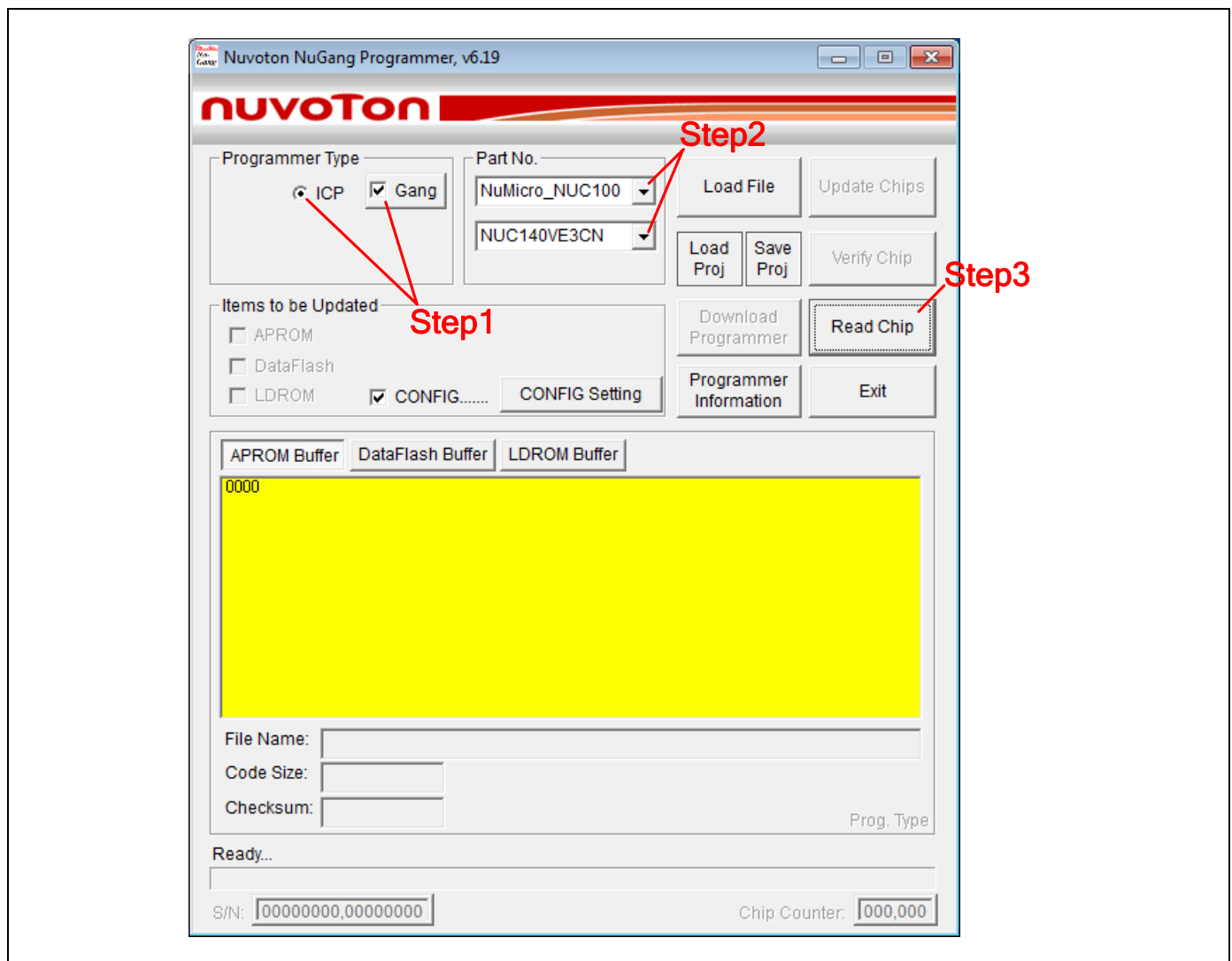
To dump the chip's contents, please follow the steps below:

Step 1: Set the programmer type as '**ICP Gang Programmer**' (set as default).

Step 2: Select the wanted part number.

Step 3: Read the chip.

Note: The chip can be dumped only when it was not locked.

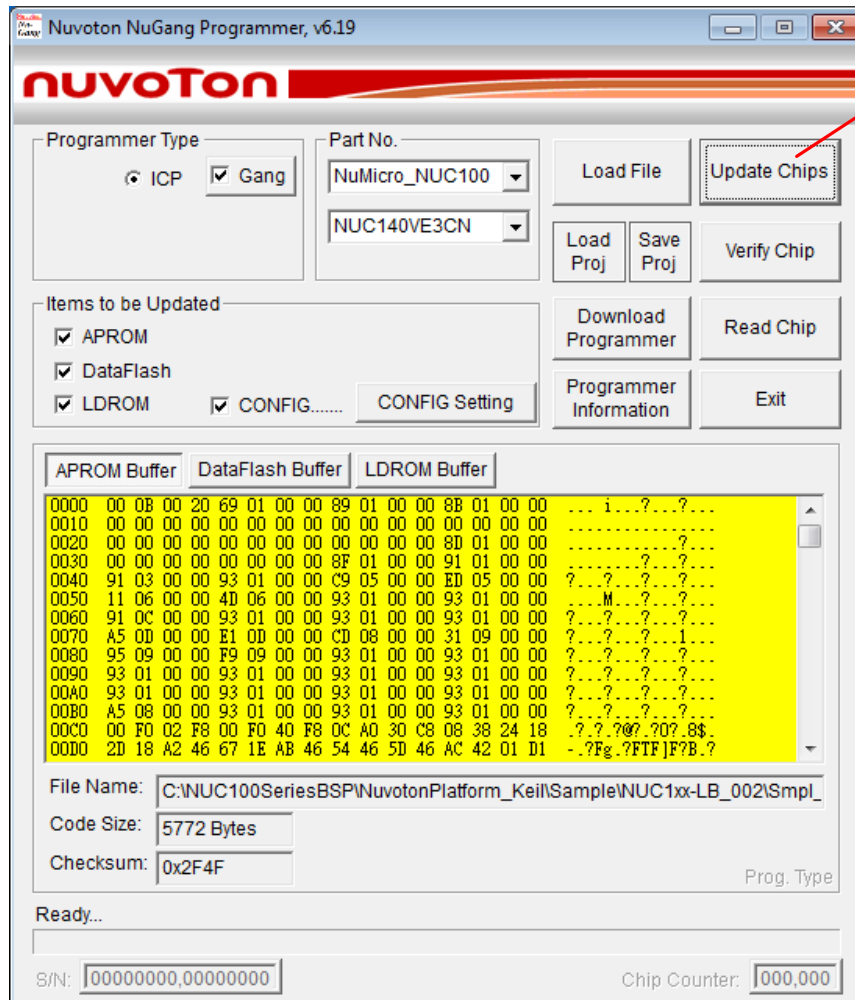


nuvoTon NuMicro™ NuGang Programmer User Manual

3.6 Updating Chips

In addition to off-line gang programming (by pressing the **AUTO**-key on the programmer), you can also do online gang programming by clicking the **Update Chips** button on the GUI, as shown below.

Note: Before starting online operation, 'Download Programmer' should be completed or you will be requested to do it. Also, the programming result of each chip will be shown through its individual LEDs on the adapter board.



3.7 Automatic Detection of 'Chip-Removed-then-Placed'

Every time the gang programming is finished, the green/red LEDs on the adapter board will keep showing the last programming result until pressing the **AUTO**-key next. Sometimes the operator might forget to press the **AUTO**-key after placing new chips into the sockets, thus the new chips are un-programmed and regarded as programmed 'PASS'. To prevent from this carelessness, the auto-detection function of 'chip-removed-then-placed' is supported. That is, the green/red LEDs will turn to Off state once the 'chip-removed-then-placed' condition is detected. After the new chips are placed into the sockets, the green/red LEDs will become Off to indicate the chips have not been programmed yet.

3.8 Special Alert for Failed Programming

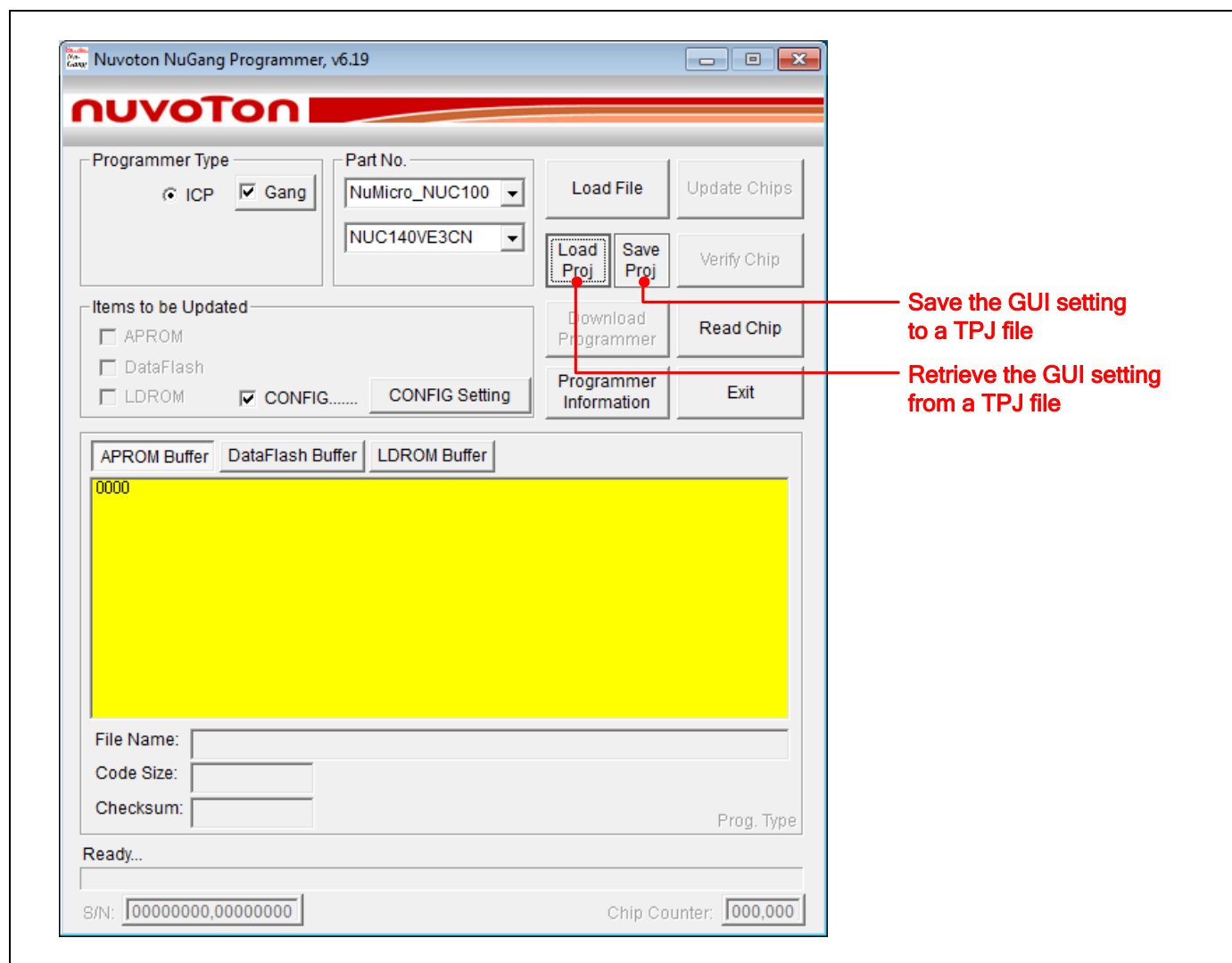
When programming is finished, if there is any chip failed, the buzzer will beep for 3 seconds to alert the operator. At this time, the operator should check the red LEDs to determine which chip(s) is/are failed.

4 Tool Project File (TPJ)

All the GUI settings can be saved into a Tool Project (TPJ) file and retrieved by loading the previously saved TPJ file. A variety of programming data can be managed by the 'project' type.

The GUI settings or the contents of the TPJ file include:

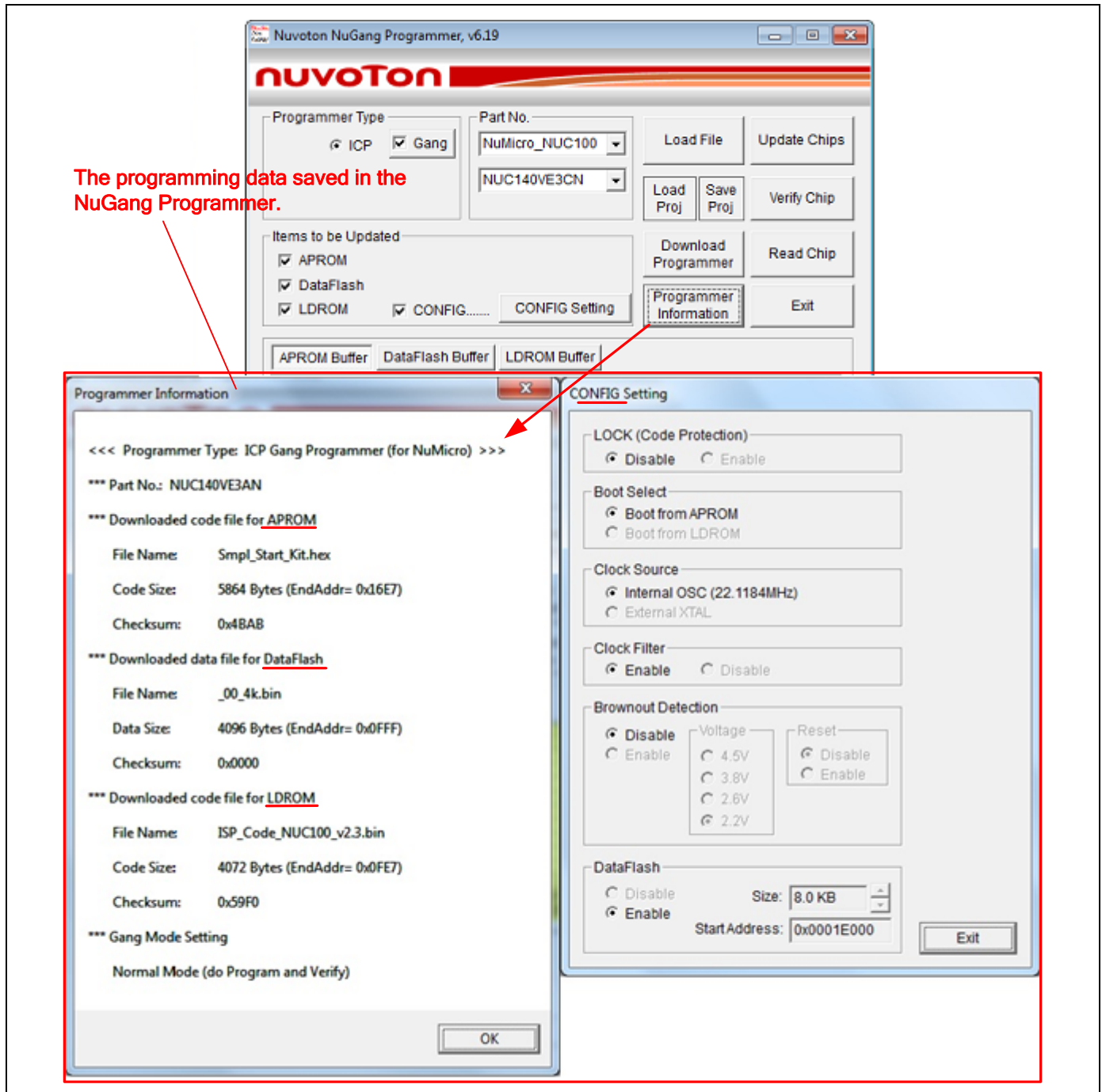
- (1) Programmer type
- (2) Part number
- (3) Items to be updated
- (4) APROM buffer data if APROM is one of the updated items
- (5) DataFlash buffer data if DataFlash is one of the updated items
- (6) LDROM buffer data if LDROM is one of the updated items
- (7) CONFIG setting if CONFIG is one of the updated items



5 Programmer Information

5.1 Checking through Application Program

To check the information of downloaded data saved in the programmer, connect the programmer to host and then click the **Programmer Information** button. The *Programmer Information* form will appear to show the downloaded data, as shown below.

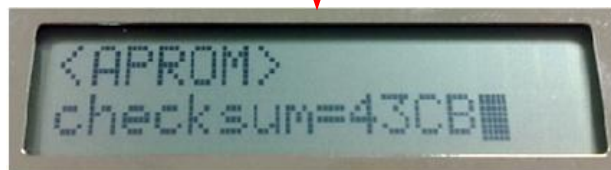


5.2 Checking through LCD Display

Every time the NuGang Programmer is powered on, the LCD module will sequentially display the previously downloaded programming data, as shown below.



The target chip's Part No.



When APROM is to be programmed, its checksum will be displayed.



When DataFlash is to be programmed, its checksum will be displayed.



When LDROM is to be programmed, its checksum will be displayed.



When CONFIG is to be programmed, its checksum will be displayed.



Programmer ready.
Now, the user may press the AUTO-key to start gang programming.

6 Advanced Functions

6.1 Serial Number Programming

Serial number (S/N) programming is used when the programmer is operated in Online mode. The serial number is BCD coded and 8 bytes long with 16 decimal digits supported. Only the APROM can be programmed with the serial number. To proceed with serial number programming, please follow the steps below:

Step 1: Right-click the window header and invoke the **Advanced Functions** command.

Step 2: Make sure the **Enable** option in the **Serial Number (S/N) Programming** section is selected.

Step 3: Specify the address, increment, and serial number to be programmed.

Step 4: Click **OK** to confirm the setting.

Note: The next time NuGang Programmer is started, the serial number shown in the lower-left corner will depend on the previously programmed serial number.

The screenshot illustrates the steps for Serial Number Programming in the Nuvoton NuGang Programmer v6.19. The main window shows the 'Programmer Type' set to 'Gang' and 'Part No.' as 'NuMicro_NUC100'. The 'Items to be Updated' section has 'APROM', 'DataFlash', and 'LDROM' checked. The 'APROM Buffer' is selected, showing a memory dump. The 'File Name' is 'C:\NUC100SeriesBSP\NuvotonPlatform_KeilSample\NUC1xx-LB_002\Sample'. The 'Code Size' is '5772 Bytes' and the 'Checksum' is '0x2F4F'. The 'S/N' field at the bottom left is highlighted with a red box and contains the value '24680000,12345678'.

A context menu is shown over the window header, with 'Advanced Functions...' selected. This opens the 'Advanced Functions' dialog box. In this dialog, the 'Serial Number (S/N) Programming' section is highlighted with a red box. It shows the 'Enable' option selected. The 'Address (in APROM): 0x' is set to '3FF8' and '3FFF'. The 'Increment' is set to '1'. The 'S/N' field is set to '24680000,12345678'. The 'OK' button is also highlighted with a red box.

Red arrows and labels indicate the steps: 'Step1' points to the 'Advanced Functions...' option in the context menu; 'Step2' points to the 'Enable' option in the 'Serial Number (S/N) Programming' section; 'Step3' points to the 'S/N' field; and 'Step4' points to the 'OK' button.

NuMicro™ NuGang Programmer User Manual

nuvoTon

As shown in the figure above, '2468000012345678' is set as the serial number for programming at address **0x3FF8** in APROM. The BCD-coded serial number programmed in the chip has a 'what you see is what you get' format, as shown below.

| | | |
|-----------|---|--------------------------|
| 00003F00: | FF FF FF FF FF FF FF FF FF FF FF FF FF FF FF | FFFFFFFFFFFFFFFF |
| 00003F10: | FF FF FF FF FF FF FF FF FF FF FF FF FF FF FF | FFFFFFFFFFFFFFFF |
| 00003F20: | FF FF FF FF FF FF FF FF FF FF FF FF FF FF FF | FFFFFFFFFFFFFFFF |
| 00003F30: | FF FF FF FF FF FF FF FF FF FF FF FF FF FF FF | FFFFFFFFFFFFFFFF |
| 00003F40: | FF FF FF FF FF FF FF FF FF FF FF FF FF FF FF | FFFFFFFFFFFFFFFF |
| 00003F50: | FF FF FF FF FF FF FF FF FF FF FF FF FF FF FF | FFFFFFFFFFFFFFFF |
| 00003F60: | FF FF FF FF FF FF FF FF FF FF FF FF FF FF FF | FFFFFFFFFFFFFFFF |
| 00003F70: | FF FF FF FF FF FF FF FF FF FF FF FF FF FF FF | FFFFFFFFFFFFFFFF |
| 00003F80: | FF FF FF FF FF FF FF FF FF FF FF FF FF FF FF | FFFFFFFFFFFFFFFF |
| 00003F90: | FF FF FF FF FF FF FF FF FF FF FF FF FF FF FF | FFFFFFFFFFFFFFFF |
| 00003FA0: | FF FF FF FF FF FF FF FF FF FF FF FF FF FF FF | FFFFFFFFFFFFFFFF |
| 00003FB0: | FF FF FF FF FF FF FF FF FF FF FF FF FF FF FF | FFFFFFFFFFFFFFFF |
| 00003FC0: | FF FF FF FF FF FF FF FF FF FF FF FF FF FF FF | FFFFFFFFFFFFFFFF |
| 00003FD0: | FF FF FF FF FF FF FF FF FF FF FF FF FF FF FF | FFFFFFFFFFFFFFFF |
| 00003FE0: | FF FF FF FF FF FF FF FF FF FF FF FF FF FF FF | FFFFFFFFFFFFFFFF |
| 00003FF0: | FF FF FF FF FF FF FF FF 24 68 00 00 12 34 56 78 | FFFFFFFFFFFFFFFFsh..14Vx |

@0x3FF8 @0x3FFF

6.2 Chip Counter

Chip counter is used to calculate the number of chips successfully programmed. To enable the chip counter and related settings, please follow the steps below:

Step 1: Right-click the window header and invoke the **Advanced Functions** command.

Step 2: Make sure the **Enable** option in the **Chip Counter** section is selected.

Step 3: Click the **Count Up (Count Down)** button to set the counter as up counter (down counter), and then specify the initial counter value.

Step 4: Click **OK** to confirm the setting.

Note: The next time NuGang Programmer is started, the chip counter shown in the lower-right corner will depend on the previously programmed chip counter.

